

Towards Trustworthy Multiparty Sessions

Roberto Bruni¹ Ivan Lanese² Hernán Melgratti³
Leonardo Gaetano Mezzina⁴ Emilio Tuosto⁵

¹Università di Pisa

²Università di Bologna

³Universidad de Buenos Aires

⁴IMT Alti Studi Lucca

⁵University of Leicester

SENSORIA General Meeting
Pisa, Italy
June 9th, 2008

- 1 Introduction & Motivation
- 2 A Glimpse of μse , graphically
- 3 Something About Types
- 4 Concluding Remarks

A Shared Vision (Hopefully!)

1st Fact

Trustworthy Service Oriented Computing is hard: services are autonomous, heterogeneous, separately designed computational entities to be dynamically assembled.

2nd Fact

Process Calculi can help: they allow to focus on salient features at a convenient level of abstraction.

3rd Fact

Behavioural types can help: syntactic descriptions of services are not expressive enough to guarantee their trustworthy assembly.

4th Fact (or mere conjecture?)

Existing techniques must be adapted: SOC has specific features like endpoints, sessions, dynamicity.

A Shared Vision (Hopefully!)

1st Fact

Trustworthy Service Oriented Computing is hard: services are autonomous, heterogeneous, separately designed computational entities to be dynamically assembled.

2nd Fact

Process Calculi can help: they allow to focus on salient features at a convenient level of abstraction.

3rd Fact

Behavioural types can help: syntactic descriptions of services are not expressive enough to guarantee their trustworthy assembly.

4th Fact (or mere conjecture?)

Existing techniques must be adapted: SOC has specific features like endpoints, sessions, dynamicity.

A Shared Vision (Hopefully!)

1st Fact

Trustworthy Service Oriented Computing is hard: services are autonomous, heterogeneous, separately designed computational entities to be dynamically assembled.

2nd Fact

Process Calculi can help: they allow to focus on salient features at a convenient level of abstraction.

3rd Fact

Behavioural types can help: syntactic descriptions of services are not expressive enough to guarantee their trustworthy assembly.

4th Fact (or mere conjecture?)

Existing techniques must be adapted: SOC has specific features like endpoints, sessions, dynamicity.

A Shared Vision (Hopefully!)

1st Fact

Trustworthy Service Oriented Computing is hard: services are autonomous, heterogeneous, separately designed computational entities to be dynamically assembled.

2nd Fact

Process Calculi can help: they allow to focus on salient features at a convenient level of abstraction.

3rd Fact

Behavioural types can help: syntactic descriptions of services are not expressive enough to guarantee their trustworthy assembly.

4th Fact (or mere conjecture?)

Existing techniques must be adapted: SOC has specific features like endpoints, sessions, dynamicity.

Our Proposal

μ se (after MULTiparty SEssions)

μ se is a process calculus for expressing computations where endpoints dynamically join existing multiparty sessions (as seen on Emilio's talk @ Munich meeting)

Types for

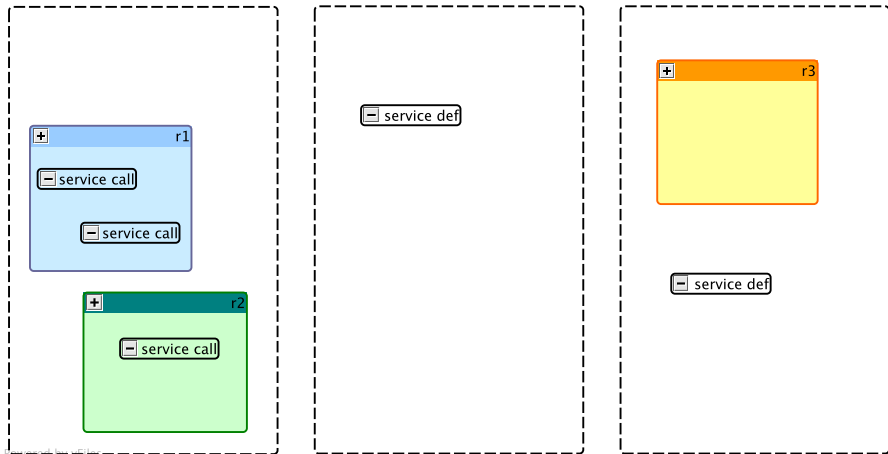
- Semantic description of services (for discovery)
- Compatibility check (for dynamic assembly)
- Early detection of possible sources of problems (trustworthiness)

Disclaimer

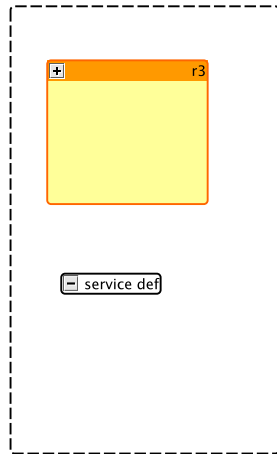
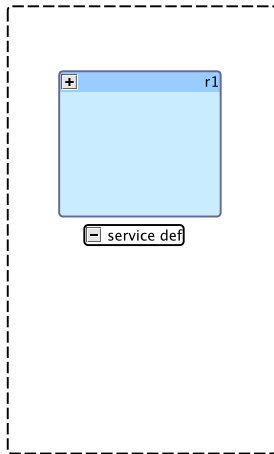
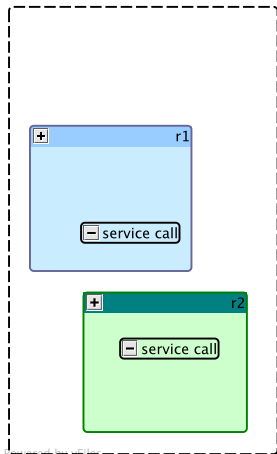
- We restrict to consider a “bare bones” fragment of μ se
- We present a parametric type system w.r.t. 3 notions (task separation, dual type compatibility, session completion)
- We conjecture subject reduction + all non-typeable processes can deadlock
- We look for stronger guarantees

- 1 Introduction & Motivation
- 2 A Glimpse of μse , graphically
- 3 Something About Types
- 4 Concluding Remarks

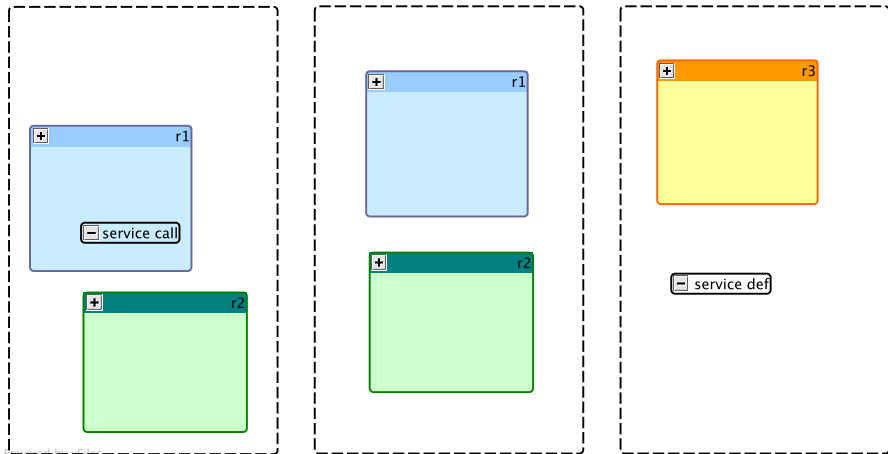
Sites, Service Invocation and Sessions



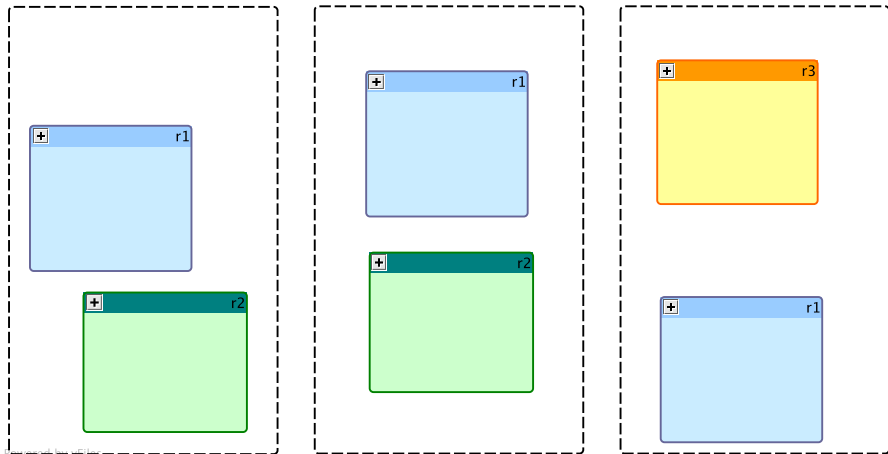
Sites, Service Invocation and Sessions



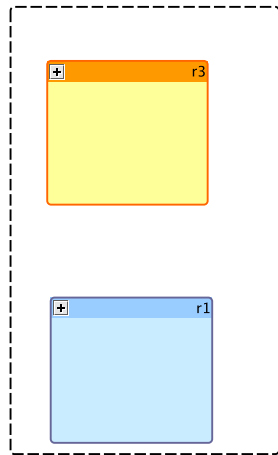
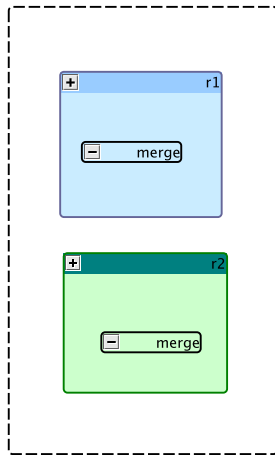
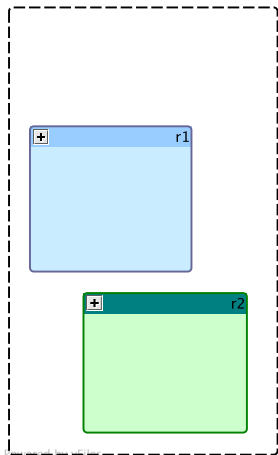
Sites, Service Invocation and Sessions



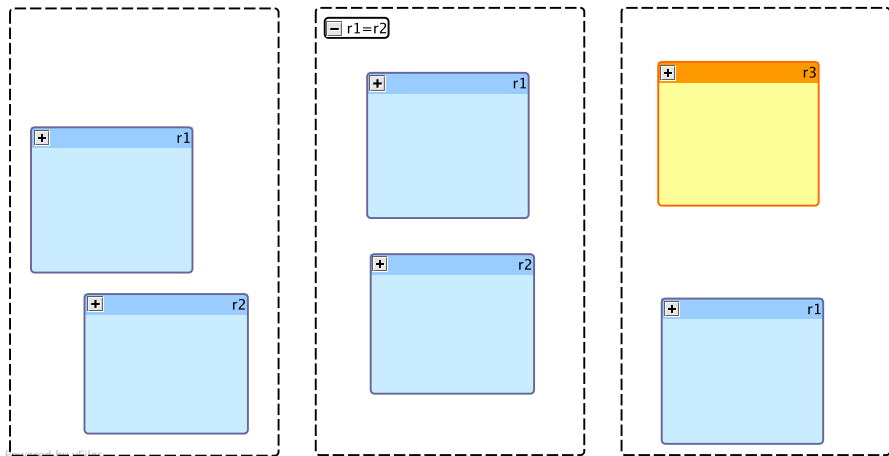
Sites, Service Invocation and Sessions



Merging Sessions



Merging Sessions



- 1 Introduction & Motivation
- 2 A Glimpse of μse , graphically
- 3 Something About Types**
- 4 Concluding Remarks

Types for Dynamic Multiparty Sessions

Type judgments

$$\Gamma; \Delta \vdash P : \{\sigma \nearrow \rho\}$$

- we call σ the *current type*, and ρ the *delegated type*
- P provides communication activities in σ and ρ
- activities σ concern the current participants of its session,
- activities ρ concern other endpoints that P itself will allow to join its session (via service invocation or merge)
- Γ is a finite partial mapping from variables X and polarized service / entry-point names n^p (with $p \in \{+, -\}$) to type pairs $\sigma \nearrow \rho$, with the understanding that actions in ρ are delegated to $n^{\bar{p}}$.
- Δ is a finite partial mapping from session names r to types σ , such that $\Delta(r)$ is the parallel composition of the current types of all endpoints of r

Self typeable systems

$$\Gamma; \Delta \vdash S : \{0 \nearrow 0\}$$

Parametric on Task Separation

Task separation

Task separation $c * \sigma$ is used to project the activities of P in separate threads for later delegation.

Our choice

Here we take the most relaxed form of separation, where $c * \sigma = c | \sigma$.

Used in

$$\begin{array}{c} \text{(T}_{\text{ACTION}}\text{)} \\ \Gamma; \Delta \vdash P : \{\sigma \nearrow \rho\} \\ \hline \Gamma; \Delta \vdash c.P : \{c * \sigma \nearrow \rho\} \end{array}$$

Parametric on Type Compatibility

Type compatibility

Type compatibility $\sigma \approx \rho$ says that σ and ρ are complementary.

Our choice

Let $I(\sigma) = \{c \mid \exists \sigma' : \sigma \xrightarrow{c} \sigma'\}$ be the set of initial actions of σ .

Here we take the largest relation on types such that whenever $\sigma \approx \rho$:

- either $I(\sigma) = I(\rho) = \emptyset$,
- or $K = I(\sigma) \cap \overline{I(\rho)} \neq \emptyset$ and, for each $x \in K$ and for each σ' and ρ' such that $\sigma \xrightarrow{x} \sigma'$ and $\rho \xrightarrow{\bar{x}} \rho'$, then $\sigma' \approx \rho'$.

Used in

Γ is *well-formed* if:

- whenever $\Gamma(n^p) = \sigma \nearrow \rho$, then $\Gamma(n^{\bar{p}}) = \sigma' \nearrow \rho'$ for some $\rho' \approx \rho$,
- whenever $\Gamma(a^-) = \sigma \nearrow \rho$, then $\sigma = 0$.

Parametric on Session Completion

Session completion

The completion set \Downarrow_0 contains those types σ that express admissible interactions of multiple endpoints.

Our choice

Here we define \Downarrow_0 as the largest set of types σ such that:

- for each $c \in I(\sigma)$ such that $\bar{c} \notin I(\sigma)$ and for each $\sigma \xrightarrow{\tau} \sigma'$ there exists σ'' such that $\bar{c} \in I(\sigma'')$ and $\sigma' \xrightarrow{\tau^*} \sigma''$,
- if $\sigma \xrightarrow{\tau} \sigma'$ then $\sigma' \in \Downarrow_0$.

Used in

We say that Δ is *fully-formed* if whenever $\Delta(r) = \sigma$, then $\sigma \in \Downarrow_0$.

Example: Two Buyers

$(\nu r_1, r_2)(l_s :: Sell \mid l_1 :: Buy_1 \mid l_2 :: Buy_2)$

$Sell = sell \Rightarrow title.install[Offer].merge^- e$

The service *sell* waits for a buyer to require a quote for a book (*title*), installs a new service *offer* for a second buyer and prepares for merging with an instance of *offer*.

$Offer = offer \Rightarrow merge^+ e.(title.(quote.Q_3|quote.Q_4))$

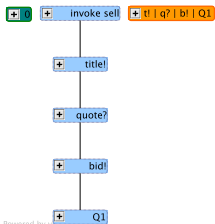
offer provides the book's *title* so that quotes are communicated to both buyers after the sessions are merged.

$Buy_1 = r_1 \triangleright invoke\ sell.title.quote.bid.Q_1$

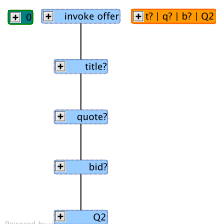
$Buy_2 = r_2 \triangleright invoke\ offer.title.quote.bid.Q_2$

Buyers communicate over *bid* and the negotiation is concluded by the interactions among *Q*, *Q*₁ and *Q*₂ (not modeled here).

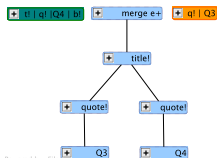
Example: Typing the Two Buyers



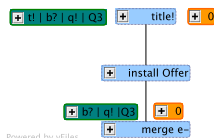
Powered by yFiles



Powered by yFiles



Powered by yFiles



Powered by yFiles

$$\Gamma = \left\{ \begin{array}{ll} \text{sell}^+ : (0 \nearrow b|t|\bar{q}|Q_3), & \text{sell}^- : (0 \nearrow \bar{b}|\bar{t}.q|Q_1), \\ \text{offer}^+ : (0 \nearrow \bar{b}|\bar{t}|\bar{q}|Q_4), & \text{offer}^- : (0 \nearrow b|t|q|Q_2), \\ e^- : (\bar{b} \nearrow 0), & e^+ : (\bar{q}|b|Q_3 \nearrow 0) \end{array} \right\}$$

(TINVOKE)

$$\frac{\Gamma; \Delta \vdash P : \{\sigma_1 | \sigma_2 \nearrow \rho\} \quad \Gamma(a^+) = \sigma \nearrow \rho' \quad \Gamma(a^-) = 0 \nearrow \sigma_2}{\Gamma; \Delta \vdash \text{invoke } a.P : \{\sigma | \sigma_1 \nearrow \sigma_2 | \rho\}}$$

(TMERGE)

$$\frac{\Gamma; \Delta \vdash P : \{\sigma_1 | \sigma_2 | \sigma_3 \nearrow \rho\} \quad \Gamma(e^p) = \sigma | \sigma_2 \nearrow \sigma_3 \quad \Gamma(e^{\bar{p}}) = \sigma' | \sigma'' \nearrow \rho' \quad \sigma \approx \sigma''}{\Gamma; \Delta \vdash \text{merge}^p e.P : \{\sigma' | \sigma_1 | \sigma'' \nearrow \sigma_2 | \sigma_3 | \rho\}}$$

- 1 Introduction & Motivation
- 2 A Glimpse of μse , graphically
- 3 Something About Types
- 4 Concluding Remarks

Conclusion

Preliminary study

Some self typeable systems can behave “badly” (no check on availability of services, entry points, etc).

Future work

- Suitable syntactic restrictions to obtain stronger guarantees.
- Change the notions of $c * \sigma$, \approx and \Downarrow_0 if needed
- Address intra-site communications

References

- **Multiparty sessions in SOC**
COORDINATION 2008, LNCS 5052, pp. 67-82, Springer, 2008.
- **Towards trustworthy multiparty sessions (extended abstract)**
PLACES 2008, Technical Report TR-08-14, DI-FCUL, 2008.

Thanks for the attention!!

Conclusion

Preliminary study

Some self typeable systems can behave “badly” (no check on availability of services, entry points, etc).

Future work

- Suitable syntactic restrictions to obtain stronger guarantees.
- Change the notions of $c * \sigma$, \approx and \Downarrow_0 if needed
- Address intra-site communications

References

- **Multiparty sessions in SOC**
COORDINATION 2008, LNCS 5052, pp. 67-82, Springer, 2008.
- **Towards trustworthy multiparty sessions (extended abstract)**
PLACES 2008, Technical Report TR-08-14, DI-FCUL, 2008.

Thanks for the attention!!