

Linux Installation Party

Luca Bassi (luca.bassi14@studio.unibo.it)

Gabriele Genovese (gabriele.genovese2@studio.unibo.it)

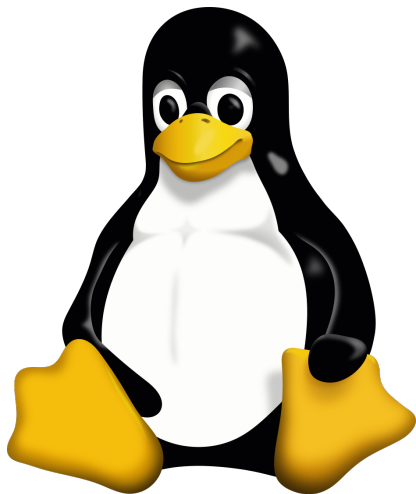
Aula Cremona, Dip. Matematica

Lunedì 25 settembre 16-19

Lunedì 2 ottobre 16-19



The GNU Project logo



Tux, the Linux's mascot

What is a Distro?



Ubuntu



linuxmint

debian



fedora



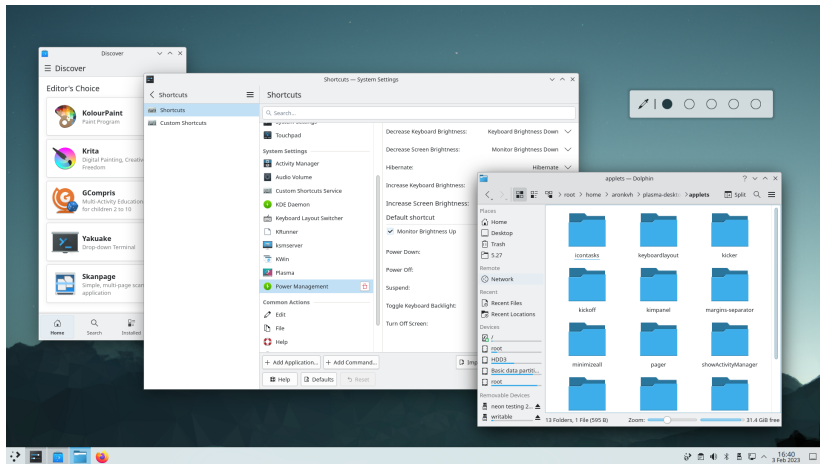
archlinux™

Desktop environment



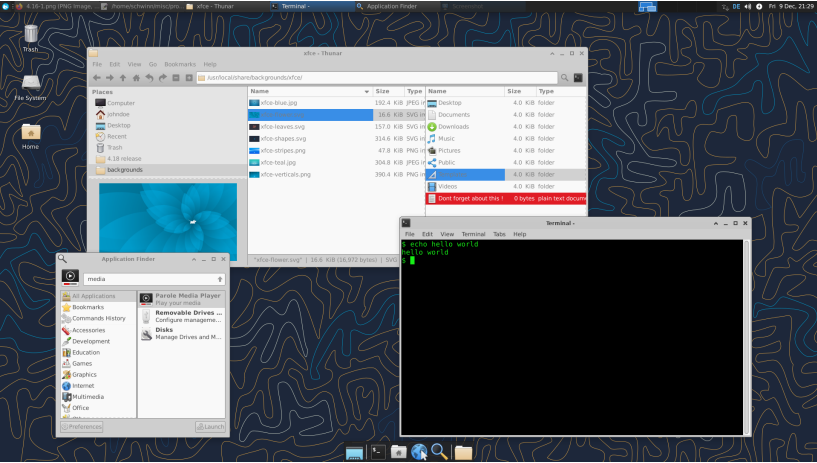
GNOME

Desktop environment



KDE

Desktop environment



XFCE

Window manager

1: Sway

This organization Search Pull requests Issues Marketplace Explore

Sway

SirCmpwn's Wayland Compositor and related projects

<http://swaywm.org> sir@cmpwn.com

Repositories 3 People 4 Teams 0 Projects 0 Settings

Search repositories... Type: All Language: All Custom

sway

i3-compatible Wayland compositor

compositor wayland

C ★ 2,783 ▼ 185 Updated 4 hours ago

wroots

A collection of libraries for wayland compositors

wayland-compositor wayland

C ★ 91 ▼ 15 Updated 5 hours ago

```
1 [] i3 config file (v4)
2 # Windows key on most keyboards
3 set $mod Mod4
4 set $term urxvt
5
6 font pango:IPAGothic 10, DejaVu Sans Mono 9
7
8 set $ws1 10
9 set $ws1 1
10 set $ws2 2
11 set $ws3 3
12 set $ws4 4
13 set $ws5 5
14 set $ws6 6
15 set $ws7 7
16 set $ws8 8
```

config/sway/config 1,1 Top

~/V/T/A/Season 1 > mpv s01
Playing: s01e01.mkv
(+) Video --vid=1 (*) '7276fps)
(+) Audio --aid=1 --alang t FLAC' (flac 2ch 48000Hz)
(+) Subs --sid=1 --slang [sub/ass] Loading font att E type application/octet-s ken Matroska file, which w rrect font MIME type.
AO: [pulse] 48000Hz 5.1 6c
VO: [gpu] 1280x720 yuv420p
QV: 00:00:00 / 00:26:01 (0)

Top lang ● C

People Invite s...

<https://github.com/swaywm> [top] [1/1]

Sway

Install Linux

Installing Linux is **easy**.

3 methods to install Linux on your computer:

- ▶ Virtual machine
- ▶ Dual boot
- ▶ As the only OS

Virtual machine...



VirtualBox: a virtual machine manager (Iketsi, CC BY-SA 4.0)

...or Dual boot?



Grub: a boot loader

Recommended installation for OS students

Debian 12 is the default Linux distribution for the Operating Systems course (AA 23/24).

You can install any distribution you want at your own risk.

We will test your projects on Debian 12.