

Figura 1-3: Schema di una tastiera.

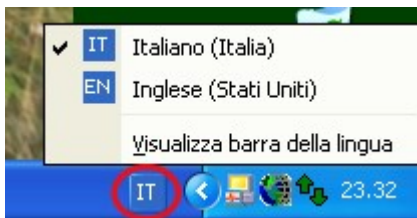


Figura 2-3: Interfaccia per la selezione del tipo di tastiera.

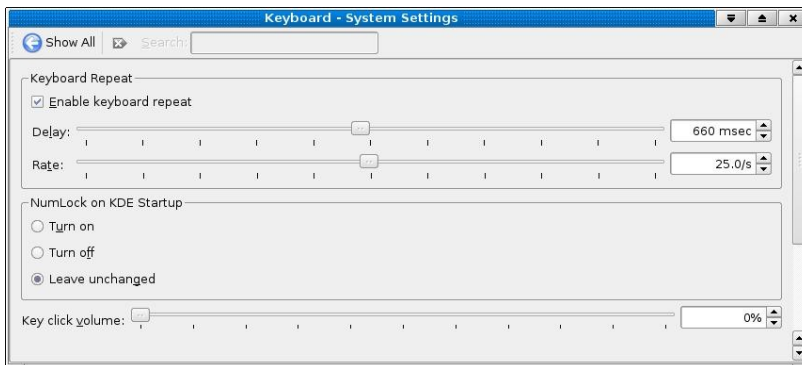


Figura 3-3: Interfaccia per la gestione della tastiera in Linux.

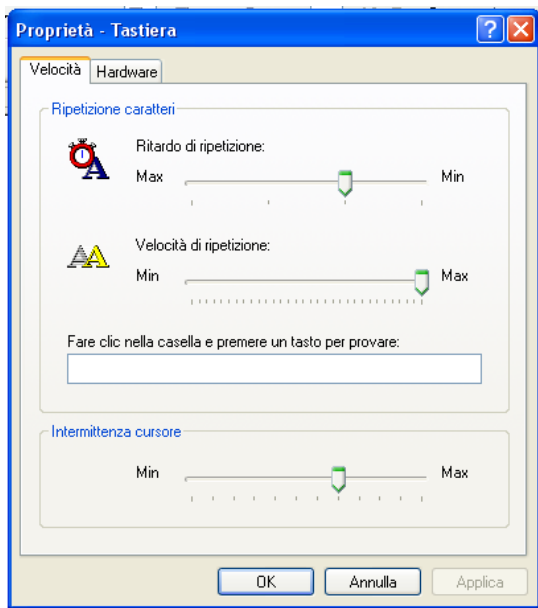


Figura 4-3: *Interfaccia per la configurazione della tastiera in Windows XP.*

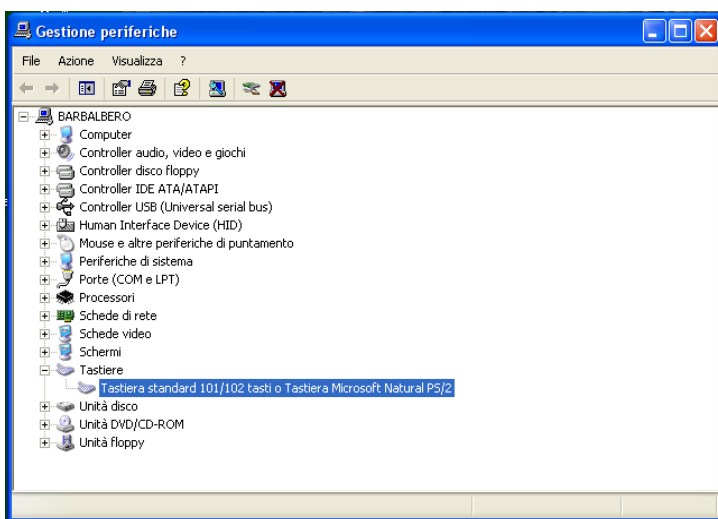


Figura 5-3: *Interfaccia per la gestione delle periferiche.*

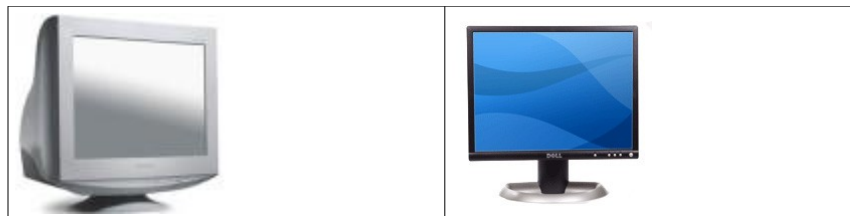
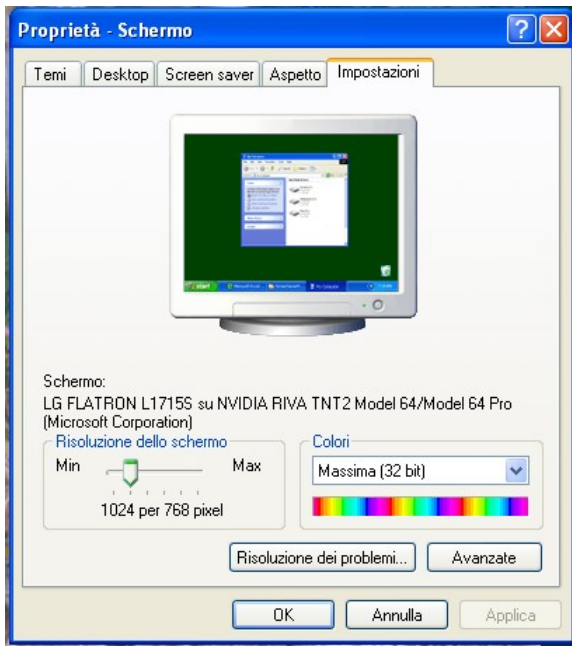
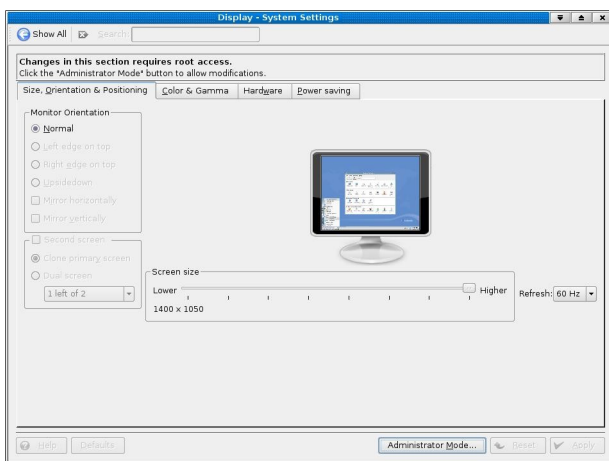


Figura 6-3: *A sinistra un monitor a tubo catodico e a destra uno a cristalli liquidi.*



*Figura 7-3: Interfaccia per la configurazione del video su MS Windows XP.*



*Figura 8-3: Interfaccia per la configurazione del video su Linux.*

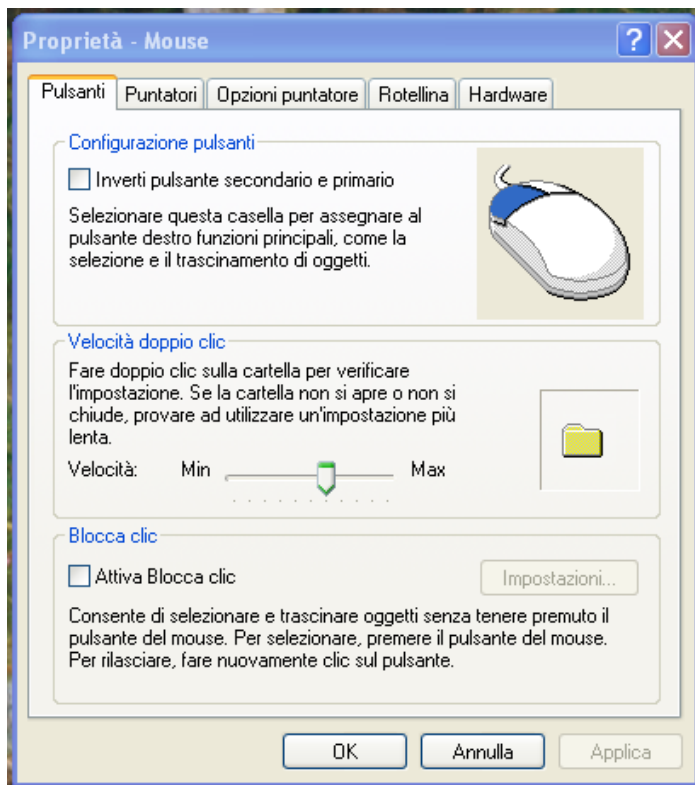


Figura 9-3: Interfaccia per l'impostazione del mouse.

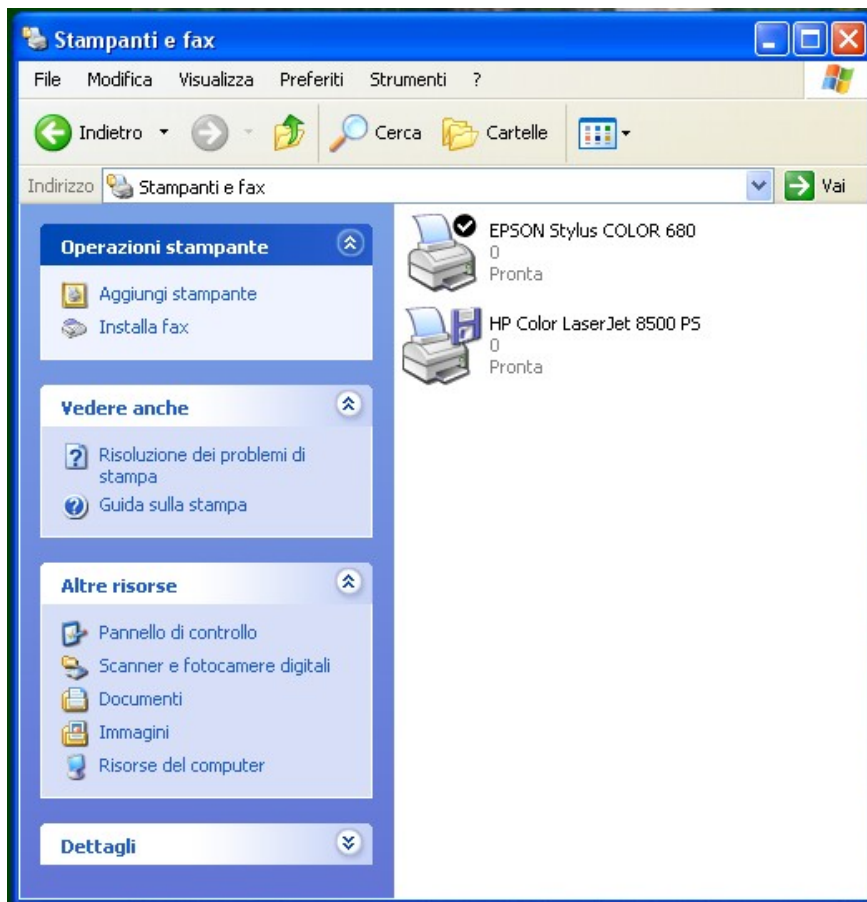


Figura 10-3: Interfaccia per l'accesso ai programmi di gestione delle stampanti.

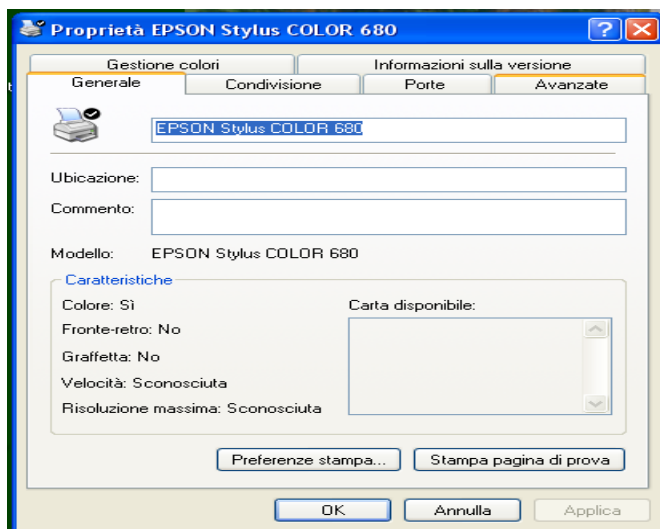
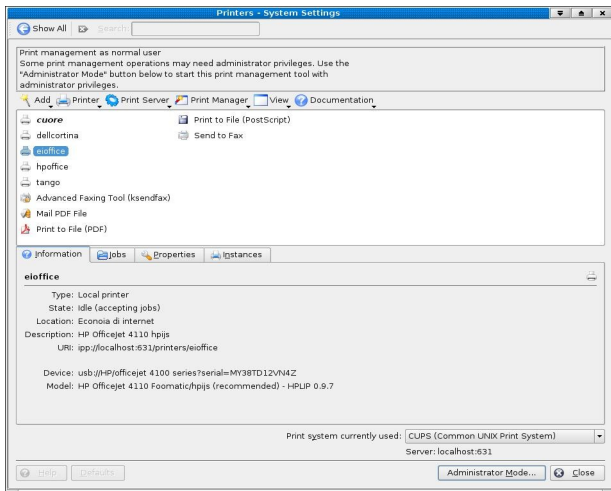


Figura 11-3: Interfaccia per l'impostazione della stampante su MS Windows XP.



*Figura 12-3: Interfaccia per l'impostazione della stampante in Linux.*